



landscape architecture

landscape architecture

Landscape Architecture is all about place making. It is about working with the public and other professions to achieve a strong design vision which can be realised and delivered. Our aim is to provide quality, creative and sustainable solutions for our clients needs.

Landscape Architecture forms an integral part of the design, planning, implementation and management of external spaces. At Fairhurst this process is considered to involve a broad range of disciplines, and our landscape architects work closely in house, as part of the Planning and Development Division, with urban designers, planners and a dedicated graphics team providing a fully integrated design service.



The Landscape Architecture teams work within the multi-disciplinary partnership preparing masterplanning documents and providing site selection and feasibility advice to clients. Our landscape architects are involved in preparing design proposals for planning applications, detailed design for tender and construction purposes, and can carry out a contract administrator role. We are currently working in the health, education, regeneration, commercial, leisure and retail sectors, whilst also supporting other divisions to deliver large scale infrastructure, flood alleviation and minerals and waste schemes.

The Landscape Architecture teams are based in Newcastle and Leeds providing a full range of landscape architectural services supporting our 15 offices nationwide, as well as having a broad portfolio of work for external clients.

Working alongside our engineering and built environment professions gives the Landscape Architecture team a unique outlook on design and ensures a broad understanding of the practical issues of project delivery and client satisfaction.

projects

Cramlington and Blyth Schools PLF – Landscape Architecture

As part of the Northumberland County Council Framework Agreement, the Landscape Architecture team were appointed by GB Building Solutions Ltd. to provide landscape architectural services for several schools in Blyth and Cramlington following the reorganisation of the county's education system, where the three tier system is being replaced by a two tier system. As a result of this redevelopment, new school buildings are being provided, or in some cases existing schools are being extended and updated to provide more modern facilities.

The layouts have been designed with careful consideration of the surrounding environment and context, aiming to maximise existing positive site features where possible and have been informed by a series of public consultation events attended by Fairhurst.



M8 ANI Network Improvements – Landscape Architecture

Fairhurst/ Mouchel (joint venture) were commissioned to consider and recommend alternative routes and junction strategies for any improvement of the A8 to motorway standard.

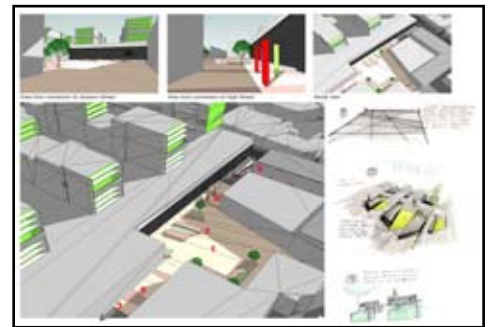
Fairhurst's Landscape Architecture Team prepared the Landscape and Visual Effects Chapter for the Stag Report and DMRB Stage 2 and 3, which assessed these alternatives and recommended a preferred route (DMRB Stage 2) and then assessed this route in further detail (DMRB Stage 3).



Trinity Square – Landscape Architecture Public Realm

The Landscape Architecture Team was commissioned by Spen Hill Development to prepare public realm proposals for a mixed use, regeneration scheme in Gateshead town centre. The proposed development incorporates retail, health care, recreation and leisure improvements integrated within a public realm design. The development is a key part of Gateshead Metropolitan Borough Councils regeneration strategy to redevelop the heart of Gateshead

Both the built form and the public realm have been designed to create a development that sits comfortably within the existing infrastructure of Gateshead town centre and respects the existing character of the area and the surrounding listed buildings. The public realm design is focused upon the creation of a new centrally located public square, linked to surrounding streets by three new streetscapes. The square has been designed to create a functional, modern public space, flexible in design to accommodate a range of activities.



North Lanarkshire – Landscape Character Assessment

The Team were appointed by North Lanarkshire Council to undertake a Landscape Character Assessment of three geographical areas within North Lanarkshire, the M8 Corridor, Community Growth Areas and Local Expansion Areas. The assessment was required to inform the location of potential growth, urban expansion and future development for the emerging North Lanarkshire Local Plan. Three levels of detail were required for the majority of the assessment which included assessing the Landscape Quality, Landscape Character Types and Landscape Elements and Features.



offices

Miles Walker
Divisional Director
Planning and Development Division
1 Arngrove Court
Barrack Road
Newcastle-upon-Tyne
NE4 6DB

Tel: 0191 221 0505
Email: miles.walker@fairhurst.co.uk

Stephen Goodchild
Technical Director Landscape
Planning and Development

Tel: 0191 221 0505
Email: stephen.goodchild@fairhurst.co.uk

Bryan Huntley
Technical Manager
Planning and Development
51a St Pauls Street
Leeds
LS1 2TE

Tel: 0113 243 4671
Email: bryan.huntley@fairhurst.co.uk

Matthew Stafford
Technical Manager
Planning and Development
11th Floor, Portland Tower, Portland Street
Manchester
M1 3LF

Tel: 0161 238 4911
Email: matthew.stafford@fairhurst.co.uk

Colin Lavety
Senior Development Planner
Planning and Development
225 Bath Street
Glasgow
G2 4GZ

Tel: 0141 204 8858
Email: colin.lavety@fairhurst.co.uk



www.fairhurst.co.uk